

FARM-TO-RETAIL-PRICE-SPREAD

February 2024 – April 2024
May 2024 Issue

FARM-TO-RETAIL-PRICE-SPREAD

May 2024

EXECUTIVE SUMMARY

The farm value share is the value of the farm product's equivalent to the final food product purchased by consumers. The Farm-to-Retail Price Spread (FTRPS) is the difference between what the consumer pays for the food product at the retail level and the value of the farm product used in that product. Price spreads measure the aggregate contributions of food manufacturing, distribution, wholesale, and retail firms that transform farm commodities into final products:

- **Poultry:** During the period between February 2024 and April 2024, the real farm value share decreased by 3.26%, while the real FTRPS of fresh whole chicken increased by 1.76%. The real farm value share of fresh whole chicken meat reached 55.41% in April 2024.
- **Beef:** During the period between February 2024 and April 2024, the real FTRPS of class A2/A3 beef increased by 0.95%, while the real farm value share decreased by 0.47%. The real farm value share reached 49.18% in April 2024. From April 2023 to April 2024 (y-o-y), the real FTRPS decreased by 12.64%, while the real farm value share increased by 4.64%.
- **Lamb:** The real FTRPS of class A2/A3 lamb decreased by 2.82% (from R80.36/kg to R78.09/kg), while the real farm value share moderately decreased by 0.37% (from 47.59% to 47.76%) during the period between February 2024 and April 2024. From April 2023 to April 2024 (y-o-y), the real farm value share decreased by 3.65%, while the real FTRPS decreased by 1.22%.
- **Pork:** The real FTRPS decreased by 3.87%, on average from R52.99/kg in February 2024 to R50.94/kg in April 2024. While the real farm value share of pork increased by 2.71% from 34.22% in February 2024 to 35.14% in April 2024.
- **Milk:** The real FTRPS for full cream milk decreased on average from R10.52/ℓ to R10.12/ℓ, representing a 3.79% decrease during the period between February 2024 and April 2024. The real farm value share increased by 3.38% during the same period.
- **Maize:** The real farm value share of maize meal (5kg) increased by 8.95% from 48.44% in February 2024 to 52.77% in April 2024. While the real FTRPS of maize meal (converted to a price per ton) decreased from R5 518.18/ton in February 2024 to R4 862.19/ton in April 2024, representing an 11.89% decrease. From April 2023 to April 2024 (y-o-y), the farm value share decreased by 11.26%, while the real FTRPS increased by 6.61%.
- **Wheat:** In April 2024, the real FTRPS for white bread (converted to a price per ton) reached R28 070.15/ton of flour, with brown bread reaching R28 139.64/ton of flour, while the real farm value share for white and brown bread reached 17.89% and 16.94%, respectively. From April 2023 to April 2024 (y-o-y), the real FTRPS for white bread and brown bread decreased by 5.88% and 3.03%, respectively.

Introduction

The Farm-to-Retail Price Spread (FTRPS) is the difference between the farm price and the retail price of food, reflecting charges for processing, shipping, and retailing farm goods. This publication attempts to provide insights into the factors driving commodity and food price margins. The purpose of this publication is to reflect on food price spreads during the period between February 2024 and April 2024. The NAMC analyses data sets to compare prices paid by consumers for food with prices received by farmers for corresponding commodities and reports the comparisons for a variety of foods sold through retail food stores such as supermarkets and hypermarkets. The margin between farm gate prices and the price the consumer pays for selected food items is a topic that is frequently debated. To better understand the difference between farm gate and retail prices, the farm values of selected products and the FTRPS are calculated. For more details on the methodology, please read [here](#).

Price Trends, Farm Values and Price Spreads

- **Poultry:** Figure 1 shows that during the period between February 2024 and April 2024, the real farm value share decreased by 3.26%, while the real FTRPS of fresh whole chicken increased by 1.76%. The real farm value share of fresh whole chicken meat reached 55.41% in April 2024. From April 2023 to April 2024 (y-o-y), the real farm value share decreased by 6.33%, while the real FTRPS increased by 14.97%. This could be due to the competitiveness in the poultry value chain being affected by factors such as imports and high feed prices, among other factors.

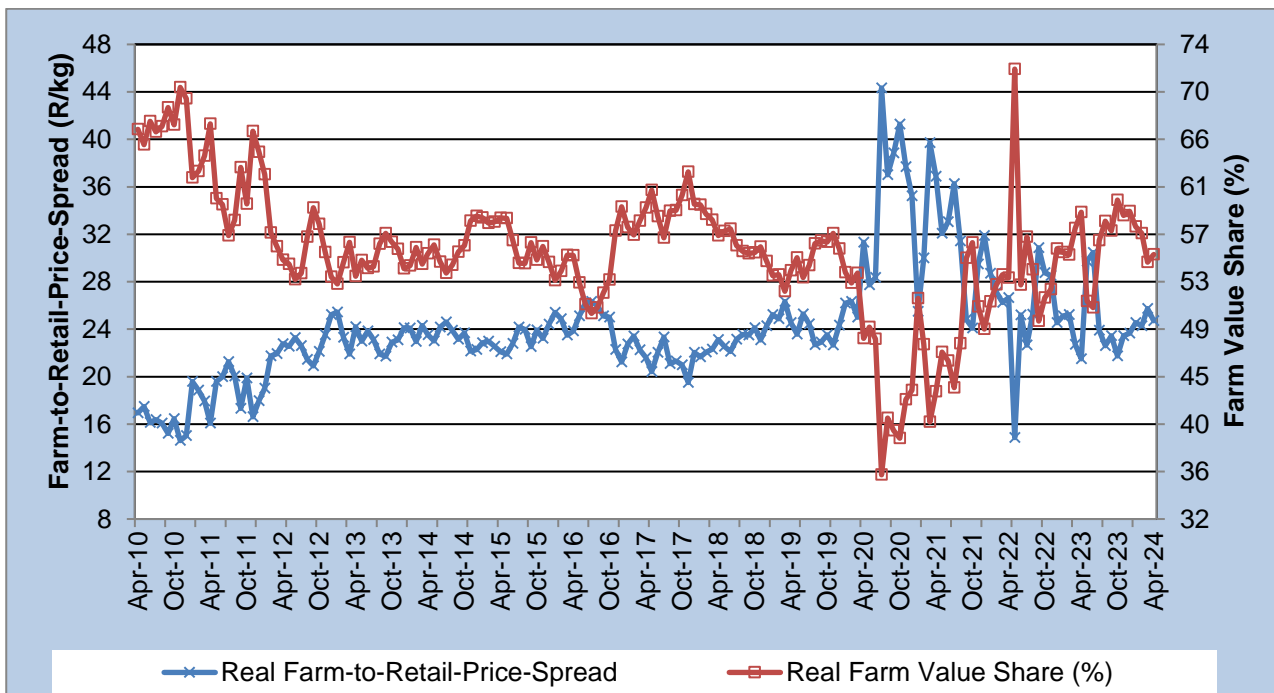


Figure 1: Real farm-to-retail-price-spread and farm value share of poultry

Source: Stats SA, 2024; AMT, 2024 and own calculations

- **Beef:** The FTRPS of beef includes additional cuts, i.e., sirloin, stew, and fillet, in the calculation of the spread from January 2017 onwards, but excludes beef offal in the calculation of the spread.

Figure 2 shows that during the period between February 2024 and April 2024, the real FTRPS of class A2/A3 beef increased by 0.95%, while the real farm value share decreased by 0.47%. The real farm value share reached 49.18% in April 2024. From April 2023 to April 2024 (y-o-y), the real FTRPS decreased by 12.64%, while the real farm value share increased by 4.64%. The gap between FTRPS and farm value share can be attributed to the lingering effects of Foot and Mouth Disease (FMD) that disrupted the production of red meat locally, changes in retail demand, and farm commodity supply.

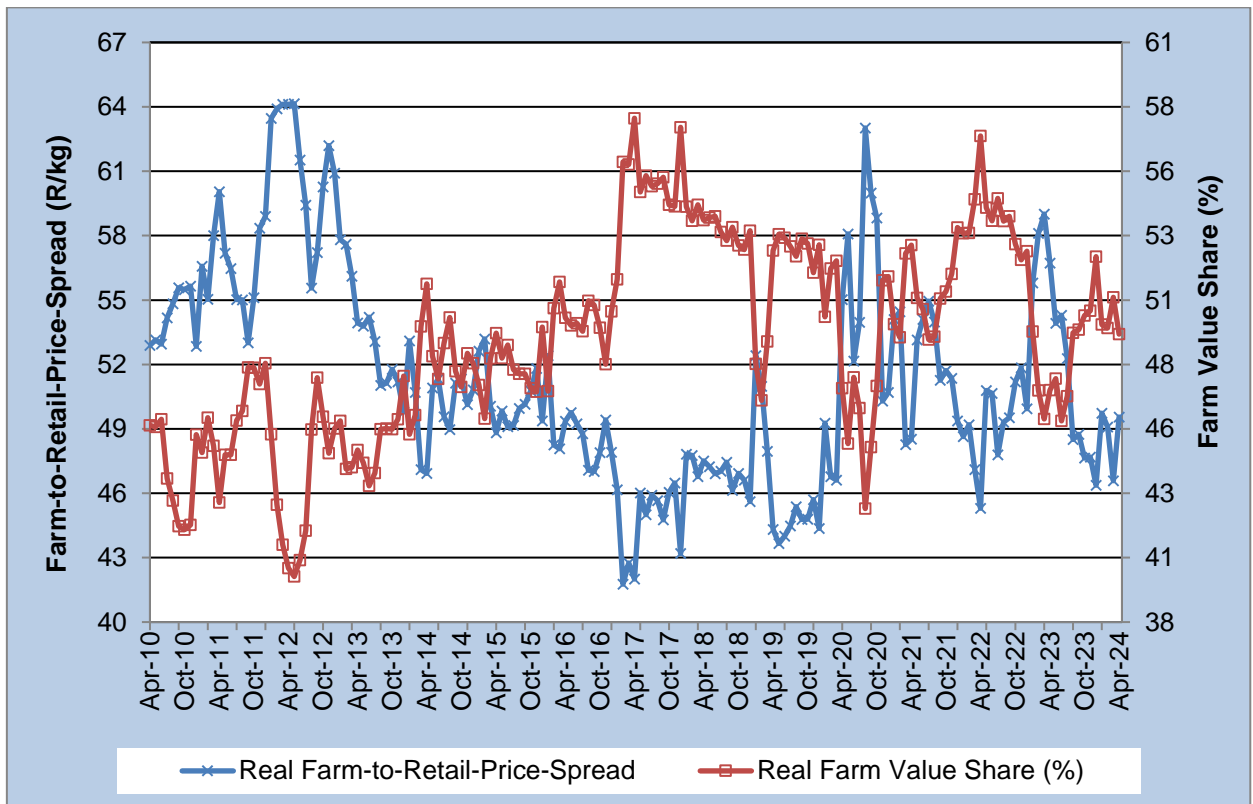


Figure 2: Real farm-to-retail-price-spread and farm value share for beef

Source: Stats SA, 2024; AMT, 2024 and own calculations

- **Lamb:** The FTRPS of lamb includes leg, loin chops (saddle chops), neck, rib chops and stew, but excludes lamb offal in the calculation of the spread.

Figure 3 shows that the real FTRPS of class A2/A3 lamb decreased by 2.82% (from R80.36/kg to R78.09/kg), while the real farm value share moderately decreased by 0.37% (from 47.59% to 47.76%) during the period between February 2024 and April 2024. From April 2023 to April 2024 (y-o-y), the real farm value share decreased by 3.65%, while the real FTRPS decreased by 1.22%.

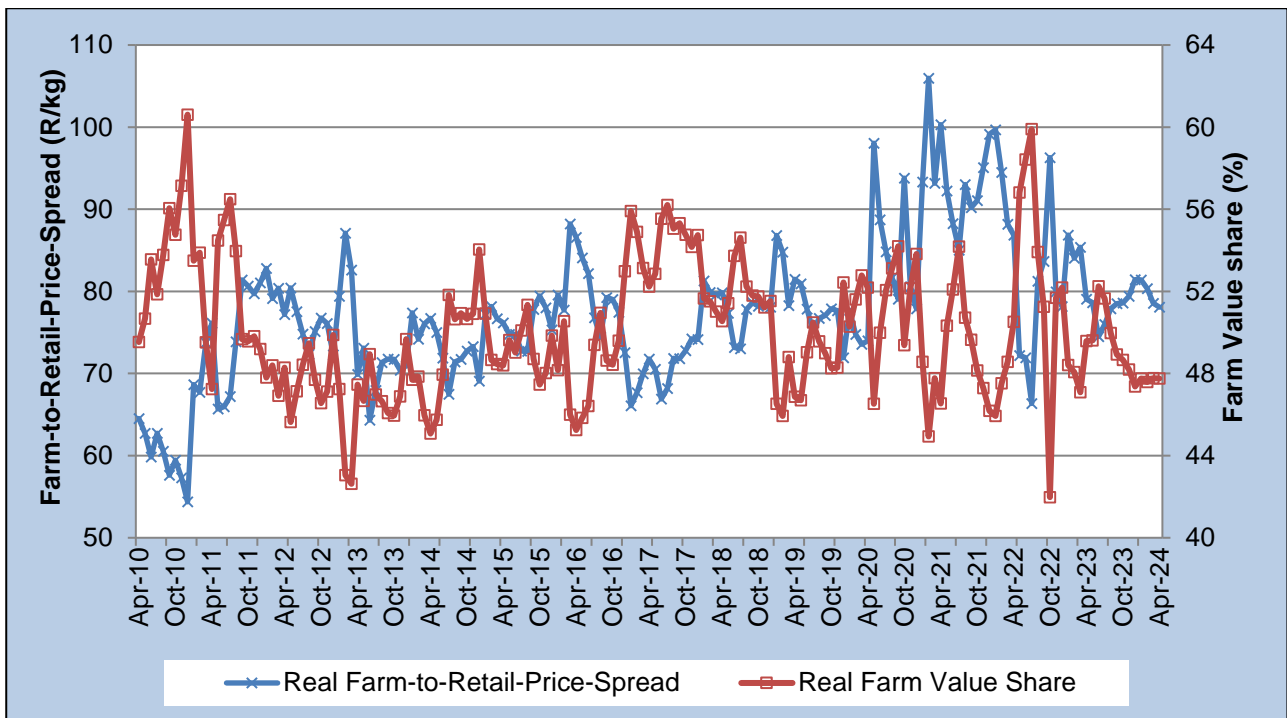


Figure 3: Real farm-to-retail-price-spread and farm value share of lamb

Source: Stats SA, 2024; AMT, 2024 and own calculations

- **Pork:** The FTRPS of pork includes pork ribs effective from January 2013.

Figure 4 shows that real FTRPS decreased by 3.87%, on average from R52.99/kg in February 2024 to R50.94/kg in April 2024. While the real farm value share of pork increased by 2.71% from 34.22% in February 2024 to 35.14% in April 2024. From April 2023 to April 2024 (y-o-y), the real FTRPS decreased by 25.69% (from R68.55/kg to R50.94/kg), while the real farm value share increased by 20.44% (from 29.18% to 35.14%).

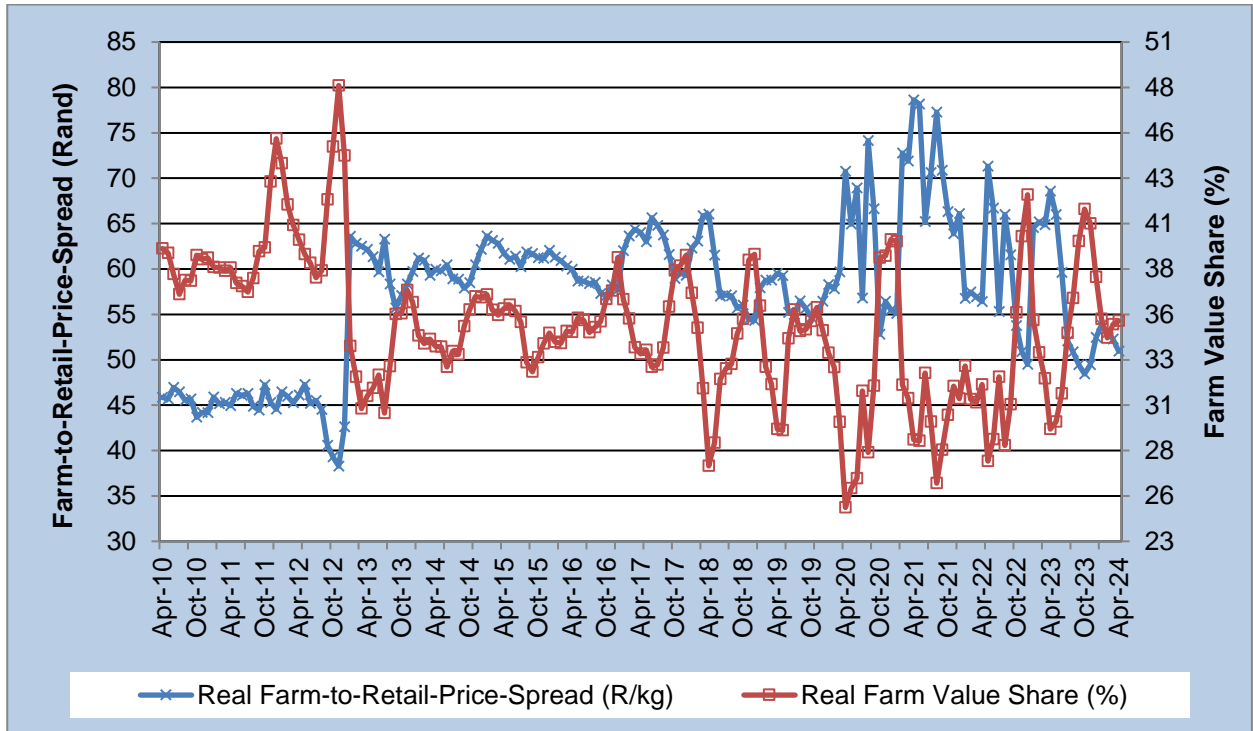


Figure 4: Real farm-to-retail-price-spread and farm value share of pork

Source: Stats SA, 2024; AMT, 2024 and own calculations

- **Milk:** Milk is an essential food product in a consumer's basket. Furthermore, milk is one of the top 10 food expenditure items for low-income households in South Africa.

Figure 5 shows that the real FTRPS for full cream milk decreased on average from R10.52/l to R10.12/l, representing a 3.79% decrease during the period between February 2024 and April 2024. The real farm value share increased by 3.38% during the same period. From April 2023 to April 2024 (y-o-y), the real FTRPS decreased by 4.69% and the real farm value share increased by 5.22%, respectively.

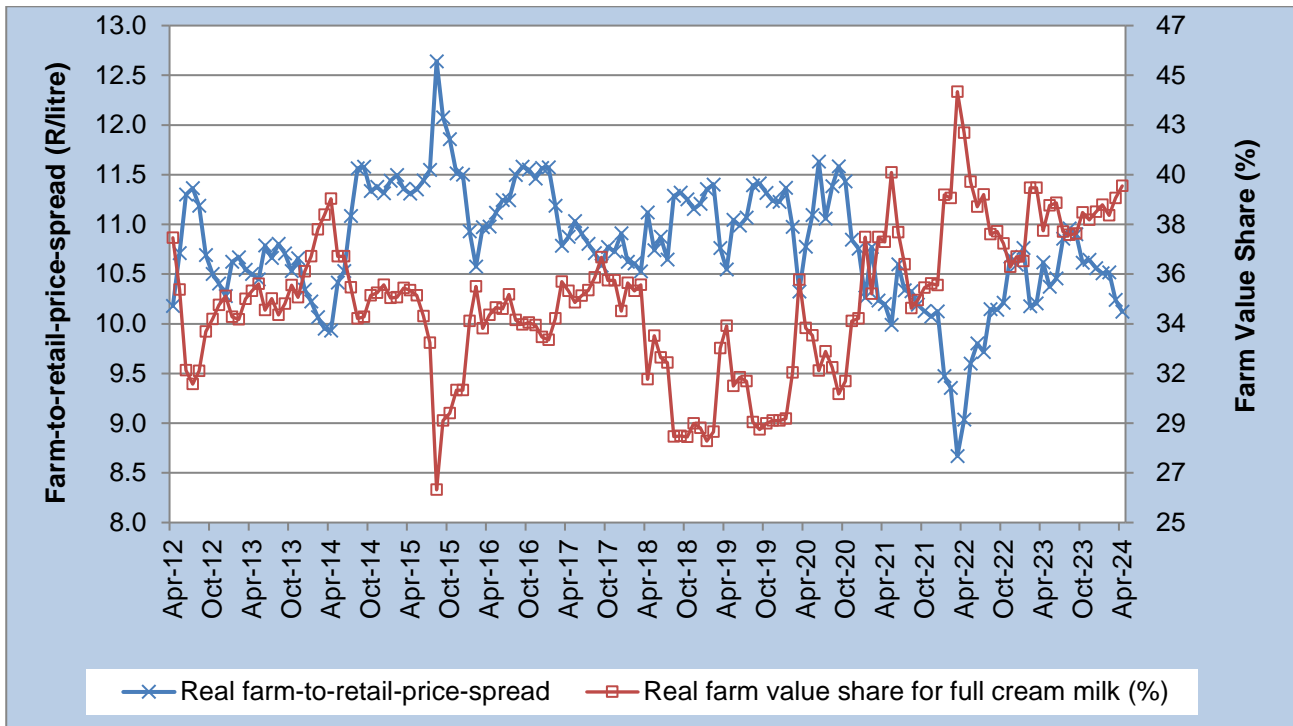


Figure 5: Real farm-to-retail-price-spread and farm value share of milk

Source: Stats SA, 2024; AMT, 2024 and own calculations

- Maize:** Due to data limitations for the monitoring of the average retail price for special maize meal (5kg) by Statistics South Africa (Stats SA) and thus exclusion from the basket in March 2022, this section only includes the spread for maize meal (5kg).

Figure 6 shows that the real farm value share of maize meal (5kg) increased by 8.95% from 48.44% in February 2024 to 52.77% in April 2024. While the real FTRPS of maize meal (converted to a price per ton) decreased from R5 518.18/ton in February 2024 to R4 862.19/ton in April 2024, representing an 11.89% decrease. From April 2023 to April 2024 (y-o-y), the farm value share decreased by 11.26%, while the real FTRPS increased by 6.61%.

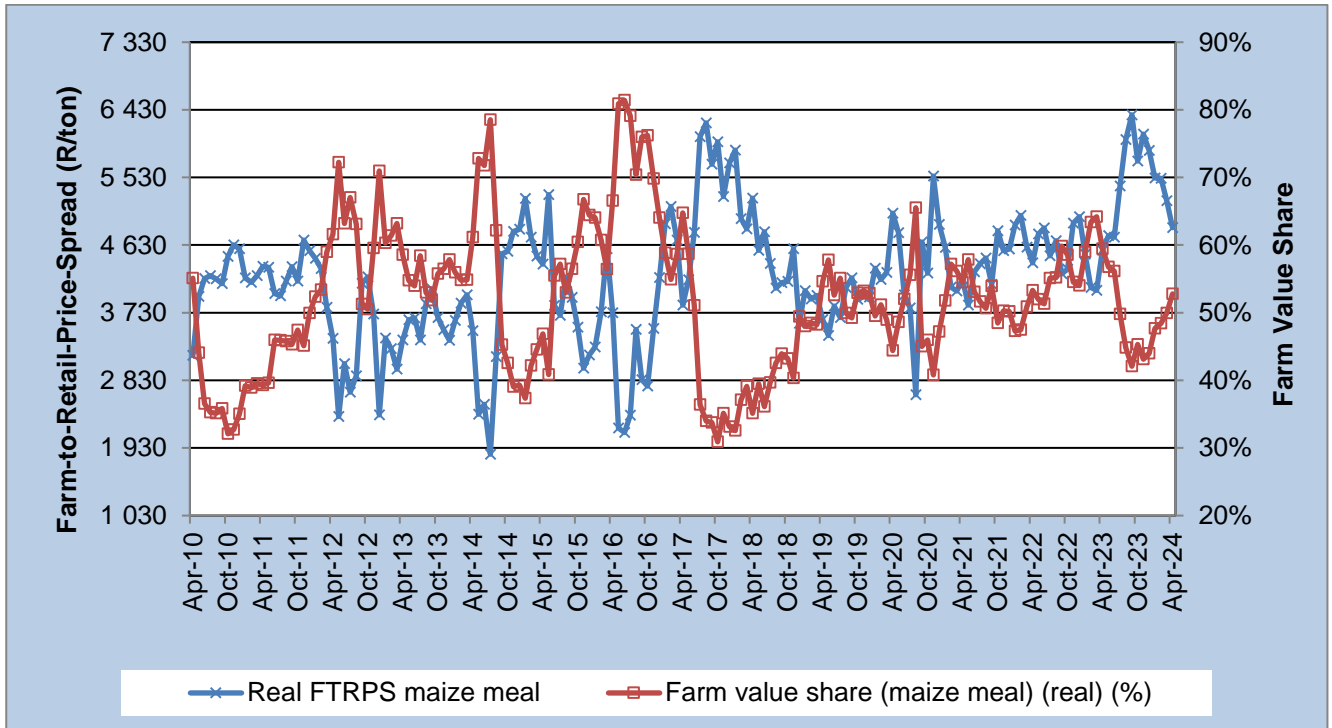


Figure 6: Real farm-to-retail-price-spread and farm value share of maize meal 5kg

Source: Stats SA, 2024 and own calculations

- **Wheat:** Figure 7 shows that in April 2024, the real FTRPS for white bread (converted to a price per ton) reached R28 070.15/ton of flour, with brown bread reaching R28 139.64/ton of flour, while the real farm value share for white and brown bread reached 17.89% and 16.94%, respectively. From April 2023 to April 2024 (y-o-y), the real FTRPS for white bread and brown bread decreased by 5.88% and 3.03%, respectively.

South Africa is a net importer of wheat in a free-market environment, and the local wheat price usually follows the overall trend of the import parity price. The local wheat price is primarily influenced by developments in the global market, the strength of the South African Rand against the United States (US) Dollar as well as fluctuations in transport costs and, to a lesser extent, changes in local production.

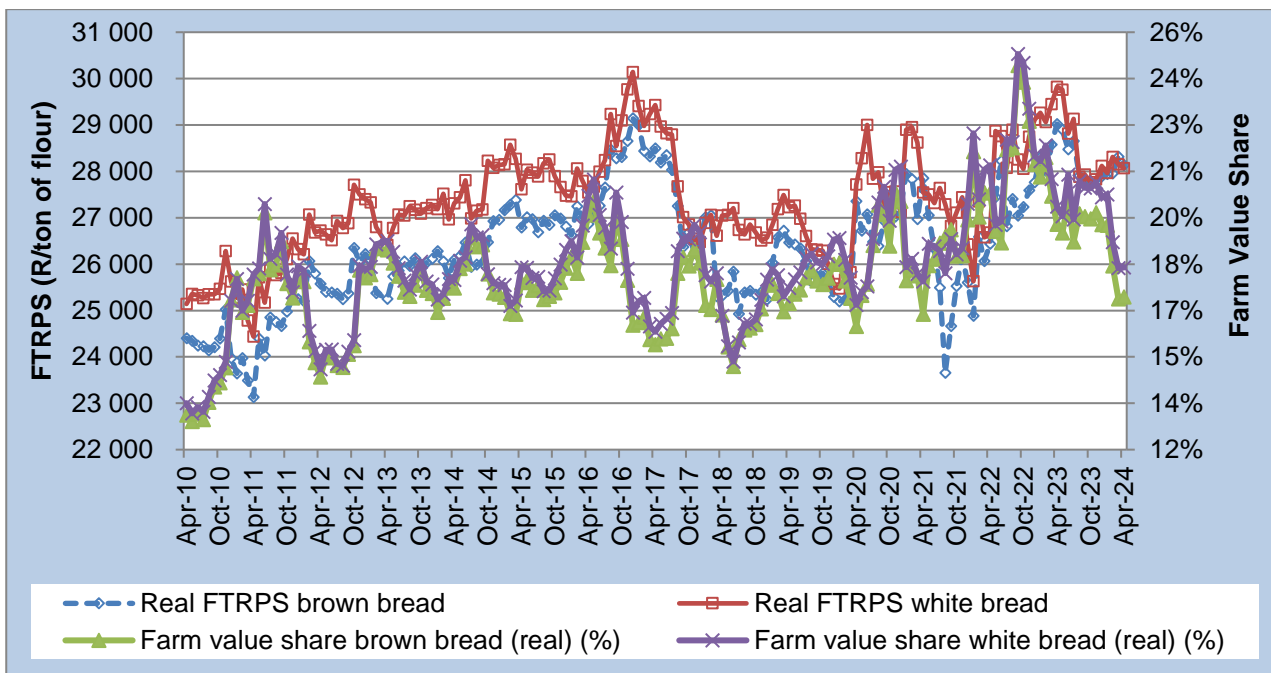


Figure 7: Real farm-to-retail-price-spread and farm value share of wheat

Source: Stats SA, 2024 and own calculations

Conclusion

This publication provides margins (farm values and farm-to-retail price spreads) for selected essential products such as maize, wheat, dairy, poultry, lamb, and beef. The updated producer and retailer prices for these selected commodities show the fluctuation between FTRPS and farm value between February 2024 and April 2024. Price fluctuations were driven by several factors, such as the openness of international trade, the level of competition in the food supply chain, and increased levels of food processing, among others. A further in-depth study of selected commodities will provide the factors behind these fluctuations.

Compiled by:

Price trends and discussion on selected topics:

Ms Corné Dempers

Dr Moses Lubinga

Cover page photos: [Pexels](#), [Pixabay](#), [Freepik](#), [Unsplash](#) and [Vecteezy](#)

Enquiries: [Dr Moses Lubinga](#): HLubinga@namc.co.za

Stats SA is acknowledged for assistance provided to the NAMC in terms of food price data.

© 2024. Published by the National Agricultural Marketing Council (NAMC).

Disclaimer:

Information contained in this document results from research funded wholly or in part by the NAMC acting in good faith. Opinions, attitudes, and points of view expressed herein do not necessarily reflect the official position or policies of the NAMC. The NAMC makes no claims, promises, or guarantees about the accuracy, completeness, or adequacy of the contents of this document and expressly disclaims liability for errors and omissions regarding the content thereof. No warranty of any kind, implied, expressed, or statutory, including but not limited to the warranties of non-infringement of third-party rights, title, merchantability, fitness for a particular purpose or freedom from computer virus is given with respect to the contents of this document in hardcopy, electronic format, or electronic links thereto. Reference made to any specific product, process, and service by trade name, trademark, manufacturer or another commercial commodity or entity are for informational purposes only and do not constitute or imply approval, endorsement or favouring by the NAMC.



T: +2712 341 1115
E: info@namc.co.za
W: www.namc.co.za